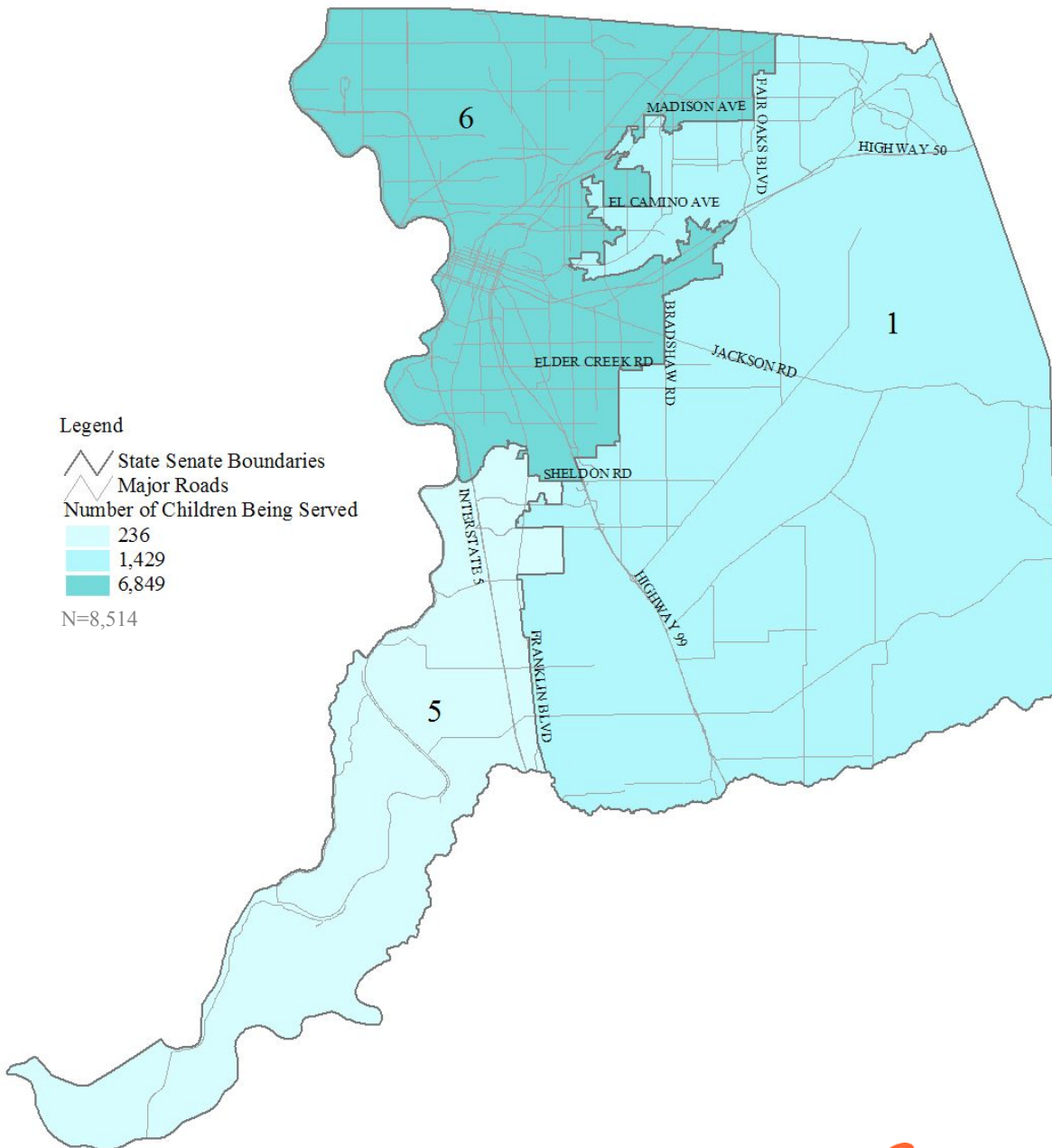




Number of Children Receiving Child Care Subsidies
through Child Action, Inc.
California State Senate Districts
Sacramento County 2010



Legend

State Senate Boundaries

Major Roads

Number of Children Being Served

236

1,429

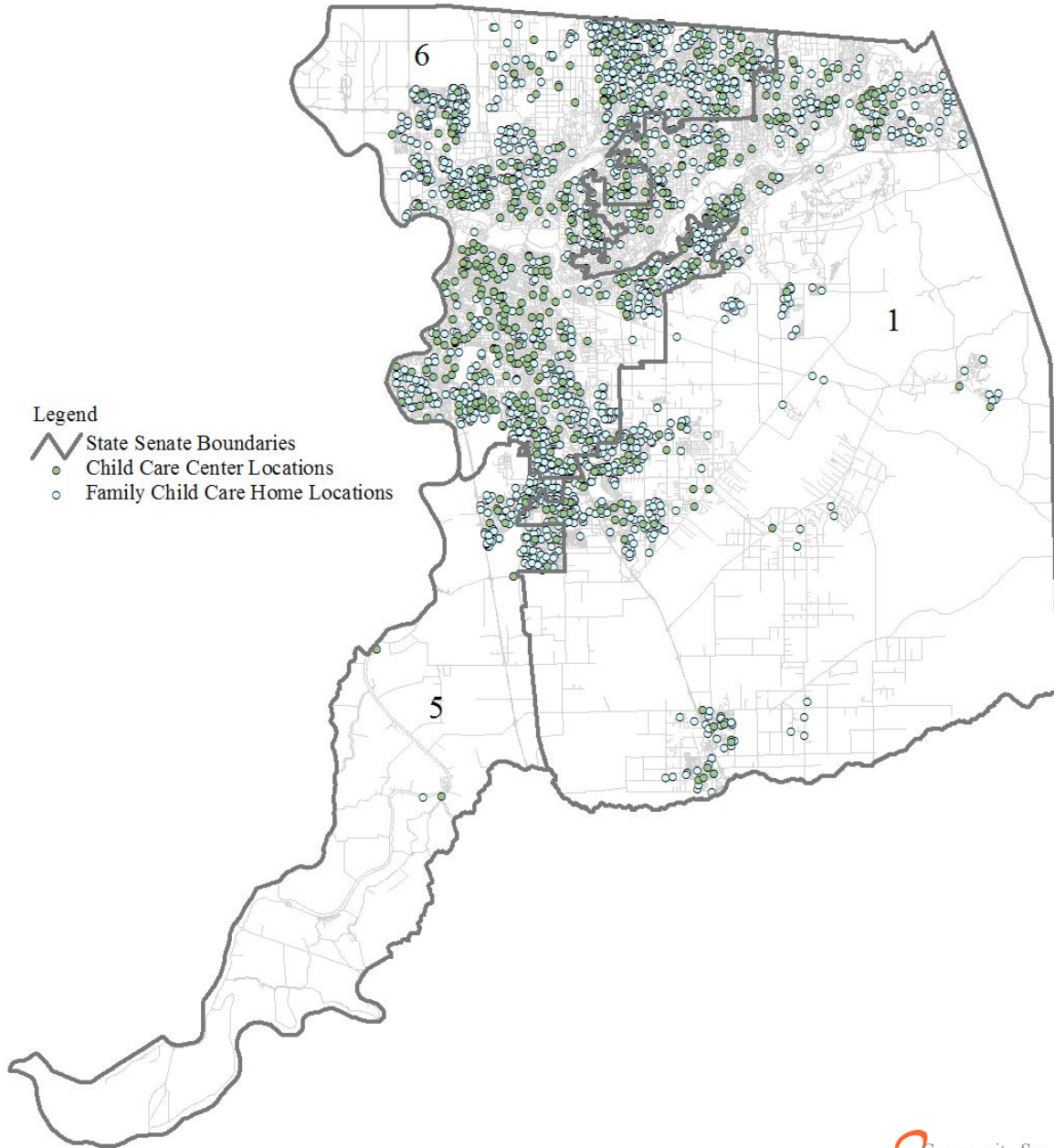
6,849

N=8,514





Licensed Child Care Providers
State Senate Districts
Sacramento County 2010

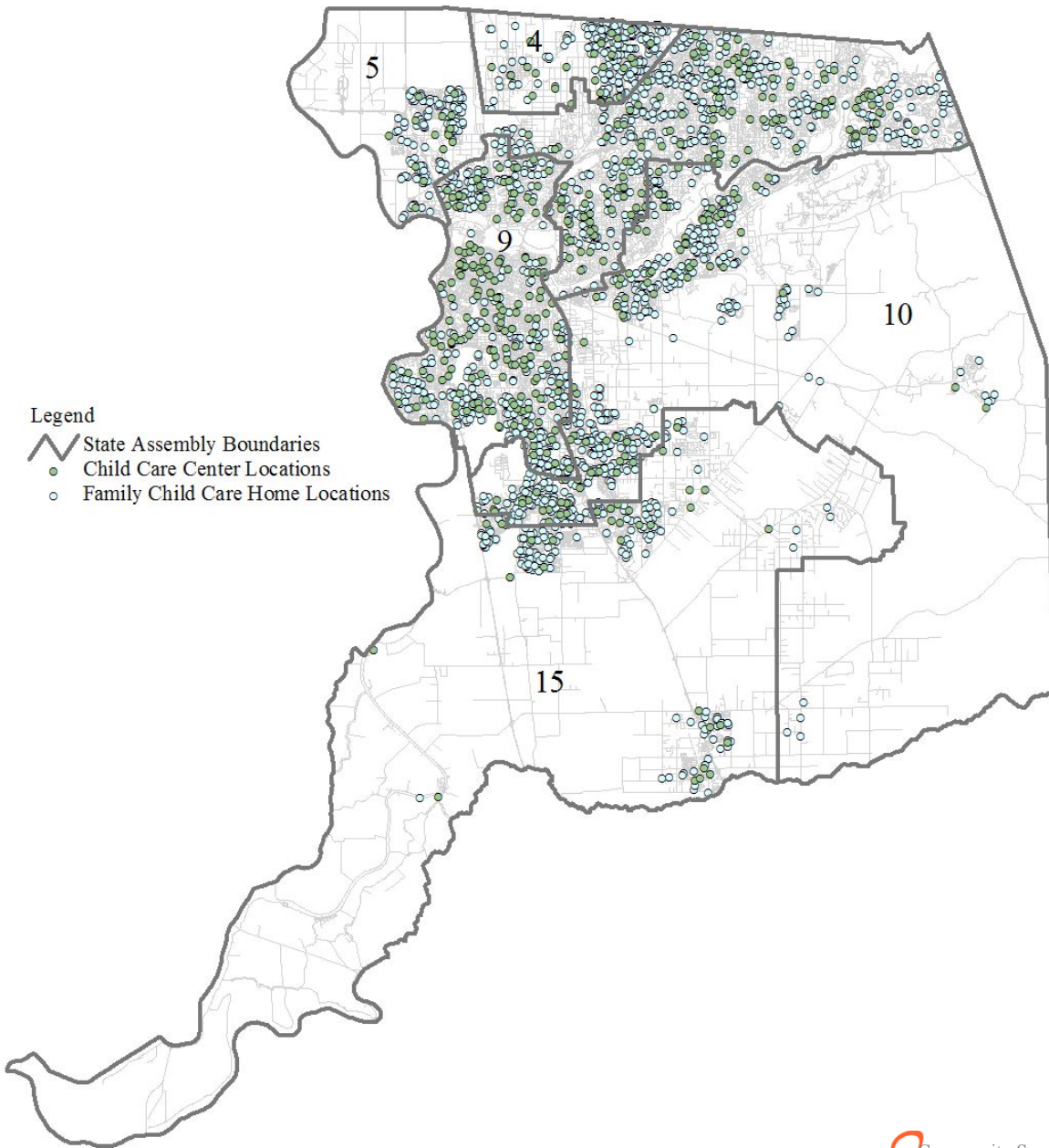


- Legend
- State Senate Boundaries
 - Child Care Center Locations
 - Family Child Care Home Locations



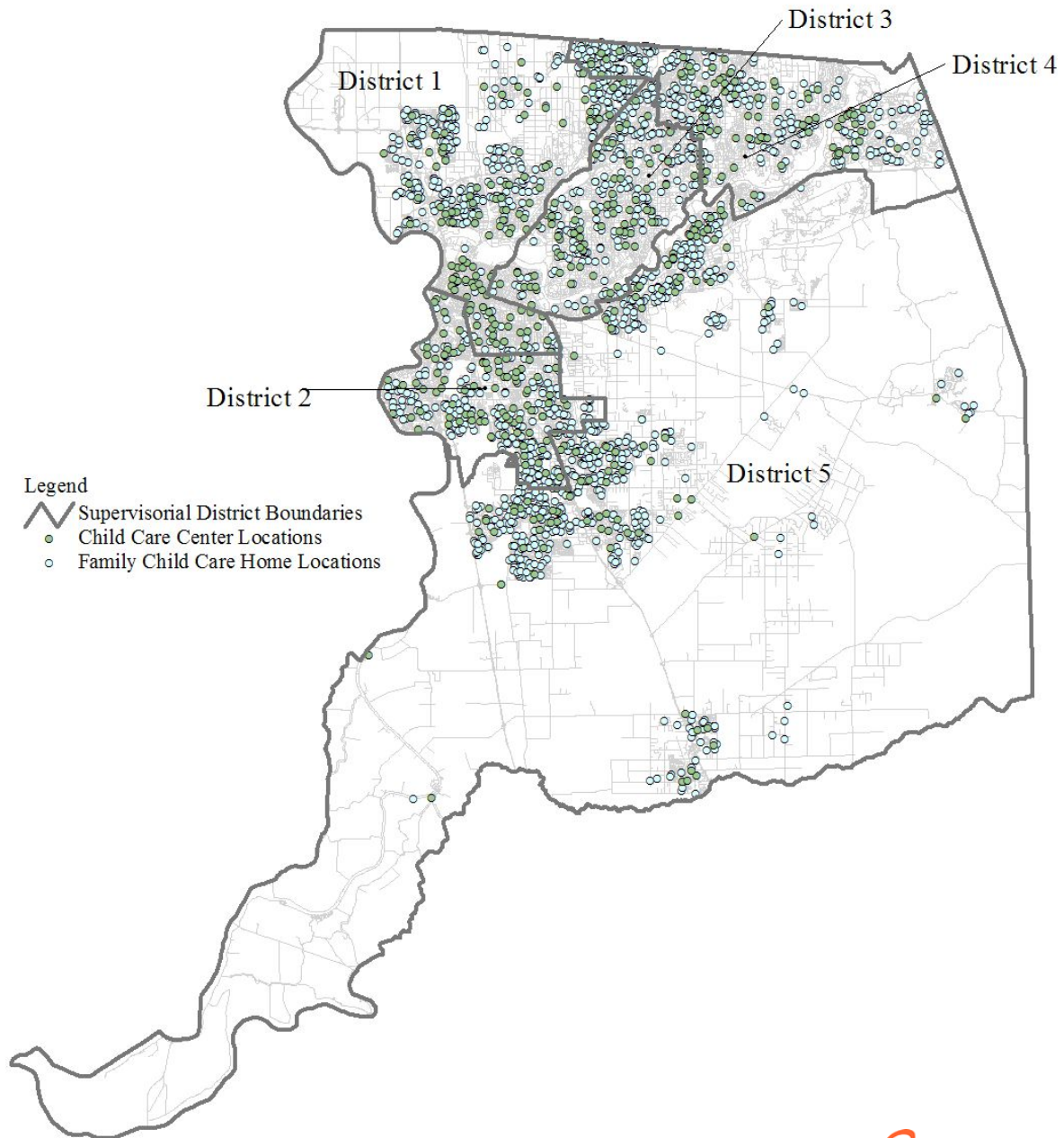


Licensed Child Care Providers
State Assembly Districts
Sacramento County 2010



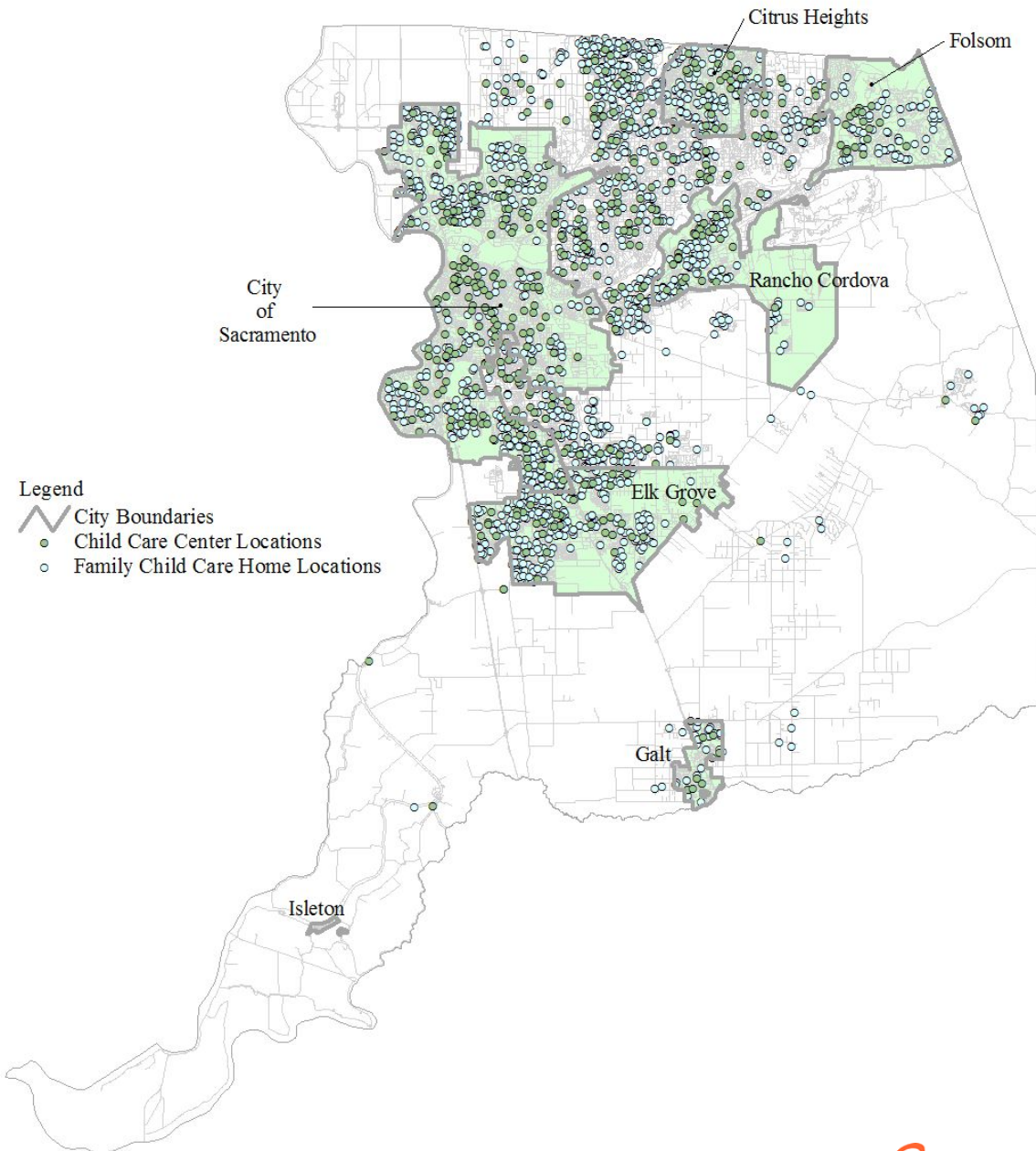


Licensed Child Care Providers
Supervisorial Districts
Sacramento County 2010



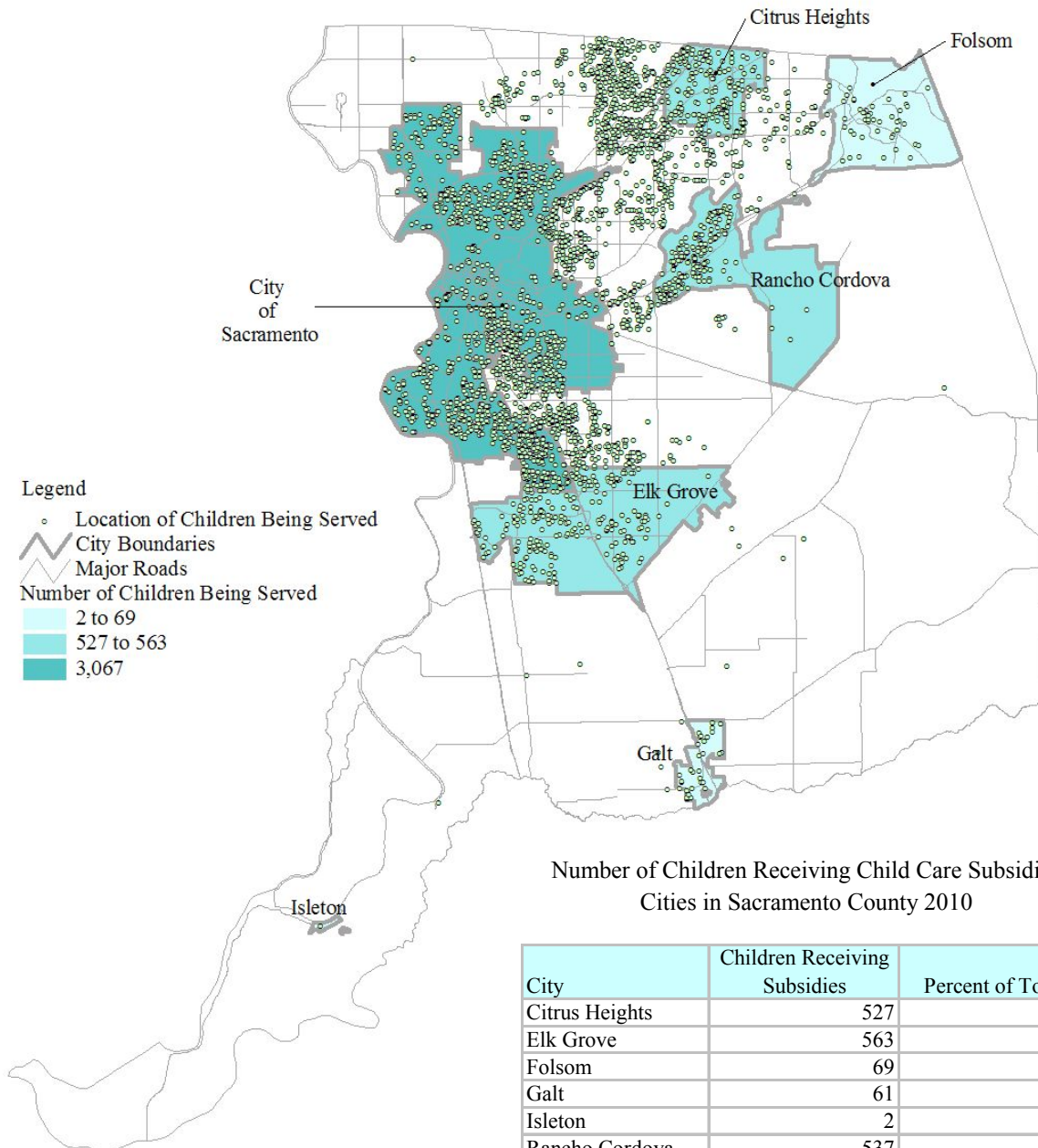


Licensed Child Care Providers by City Sacramento County 2010





**Number of Children Receiving Child Care Subsidies
through Child Action, Inc.
Cities in Sacramento County 2010**



- Legend**
- Location of Children Being Served
 - City Boundaries
 - Major Roads
 - Number of Children Being Served**
 - 2 to 69
 - 527 to 563
 - 3,067

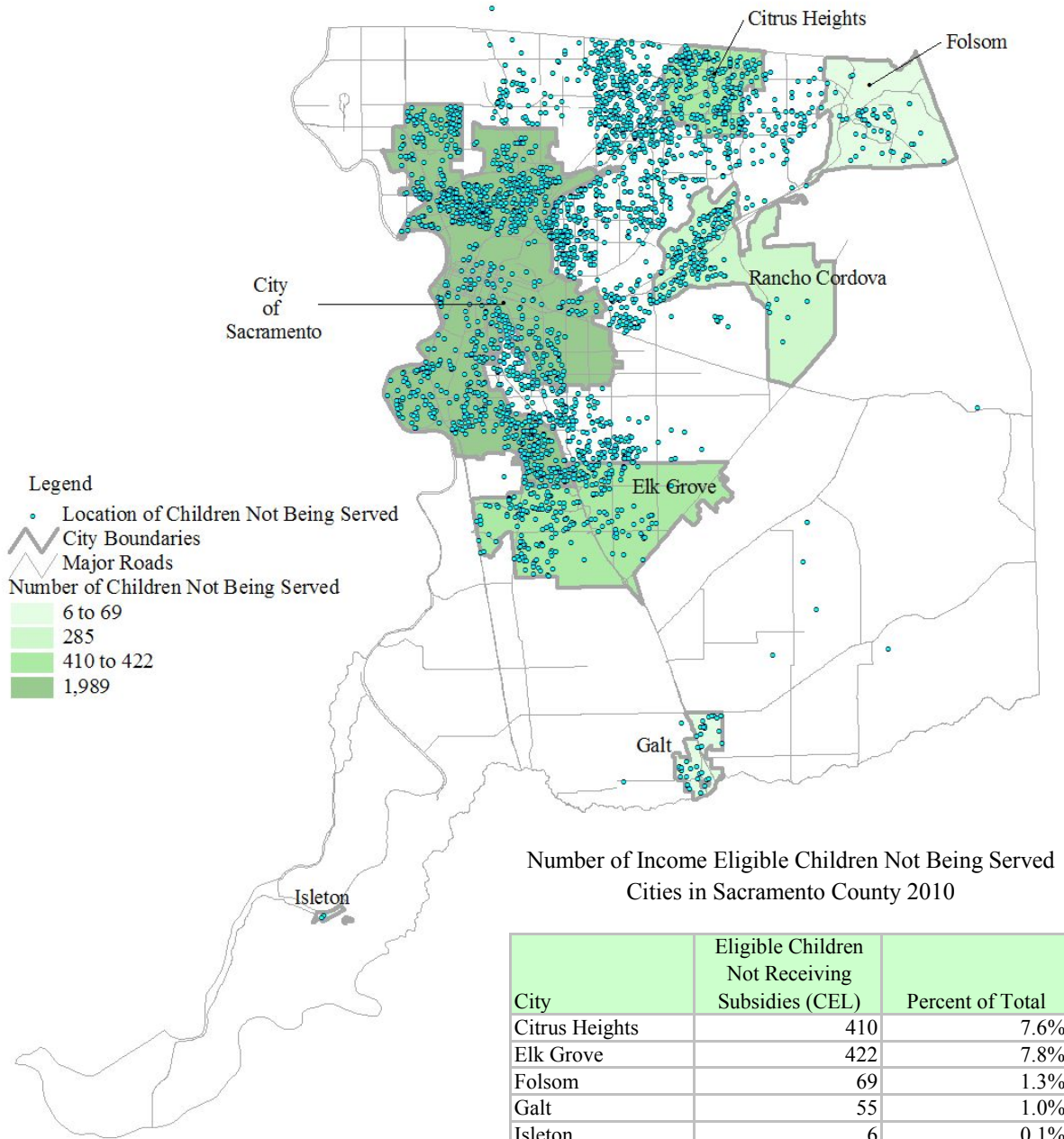
**Number of Children Receiving Child Care Subsidies
Cities in Sacramento County 2010**

City	Children Receiving Subsidies	Percent of Total
Citrus Heights	527	6.2%
Elk Grove	563	6.6%
Folsom	69	0.8%
Galt	61	0.7%
Isleton	2	0.0%
Rancho Cordova	537	6.3%
Sacramento	3,067	36.0%
Total	8,514	100.0%





**Number of Income Eligible Children Listed on the
Centralized Eligibility List (CEL) for Subsidized Child Care Services
Cities in Sacramento County 2010**



**Number of Income Eligible Children Not Being Served
Cities in Sacramento County 2010**

City	Eligible Children Not Receiving Subsidies (CEL)	Percent of Total
Citrus Heights	410	7.6%
Elk Grove	422	7.8%
Folsom	69	1.3%
Galt	55	1.0%
Isleton	6	0.1%
Rancho Cordova	285	5.3%
Sacramento	1,989	36.7%
Total	5,414	100.0%

